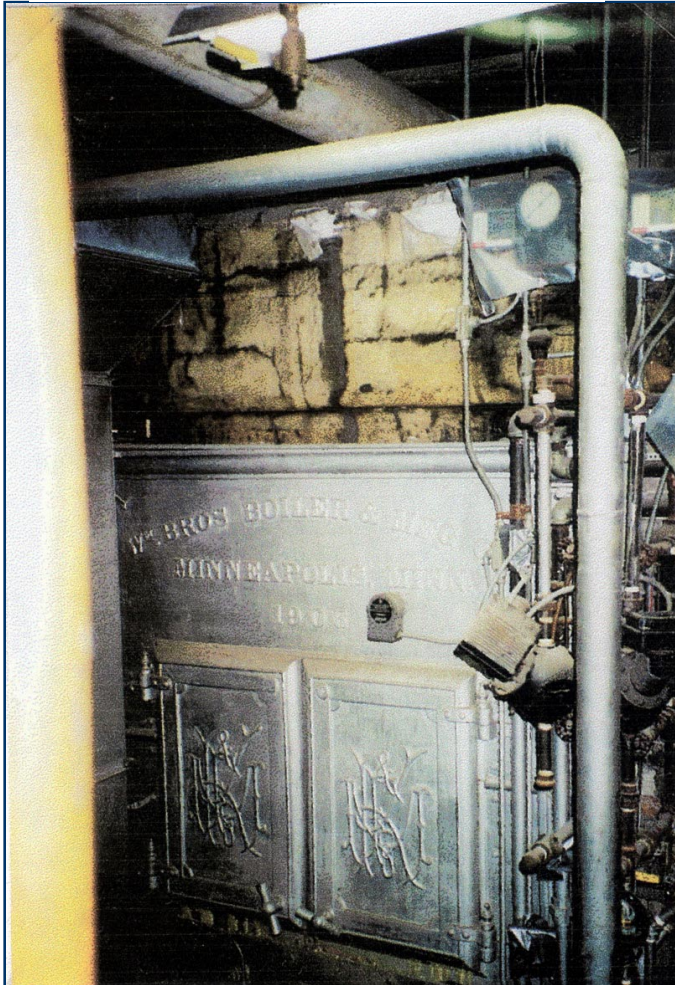




Abatement by Encasement:
Safeguarding People
while Saving Money SM.



SCOTTISH RITE CATHEDRAL

Challenge: This late 1800 era church building located just south of downtown Minneapolis, MN, had its original boilers and associated piping insulated with Asbestos Containing Material (ACM). The insulation was in highly friable condition and their insurance carrier the pursuance of abatement ASAP. A low bid of \$33,000 was obtained for abatement via removal and replacement of the 2,000 SF of ACM insulation.

Solution: The Minneapolis Historical Society recommended the use of a SAFE Encasement System. SE-110 Penetrating-Stabilizer was spray applied at 18-20 wet mils directly over both wrapped and unwrapped insulation. Care was taken to mist apply the SE-110, so as not to disturb the ACM. This was left to dry overnight to allow for penetration and curing of the flexible matrix that renders the old insulation non-friable, then an 18-20 wet mil film of SE-120 topcoat was spray applied, producing a seamless protective barrier that does not adversely impact the insulation value. This job was completed over one weekend, and the final installed price was less than a third (33%) of the removal and replacement bid.

